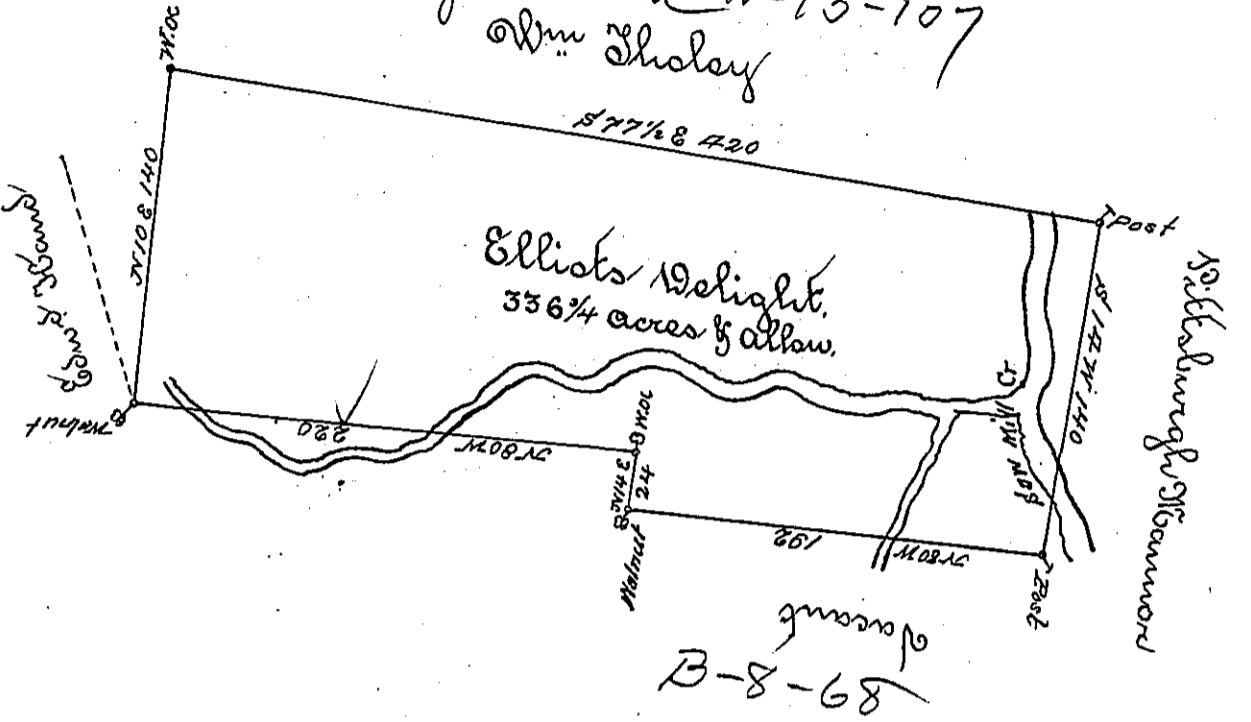


Pages 16 and 2-13-107
Wm Sholey



The above is a Draught of a Tract of Land situate on Saw Mill run
 Survey of Sept 14th 1784 In pursuance of an order of Survey No. 2120 in
 the name of Daniel Elliot. it contains Three hundred and ~~forty~~ ^{thirty-six 1/4} acres
~~& 64 perches~~ with six & cent allow for Roads &c and Called Elliot's De-
 light

John Lukens Esq
 S. J. L.

David Reedick

IN TESTIMONY that the above is a copy of the original remaining on file in the
 Department of Internal Affairs of Pennsylvania, made con-
 formably to an Act of Assembly approved the 16th day of
 February, 1833, I have hereunto set my Hand and caused
 the Seal of said Department to be affixed at Harrisburg, this
 Seventh day of April 1896.

James W. Fulton
 Secretary of Internal Affairs.